

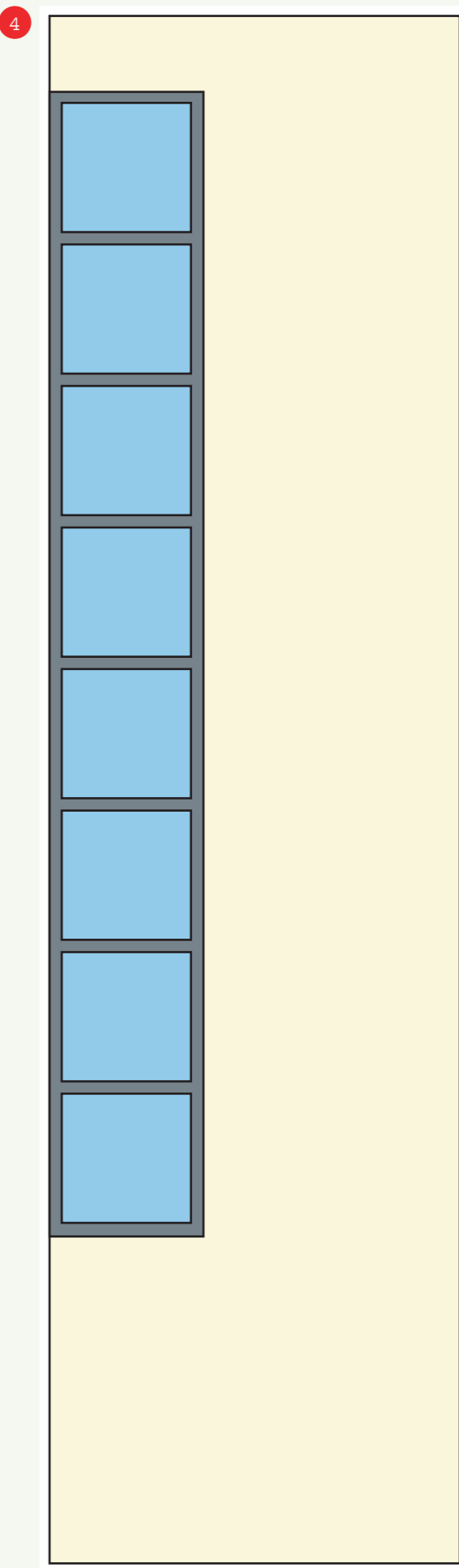
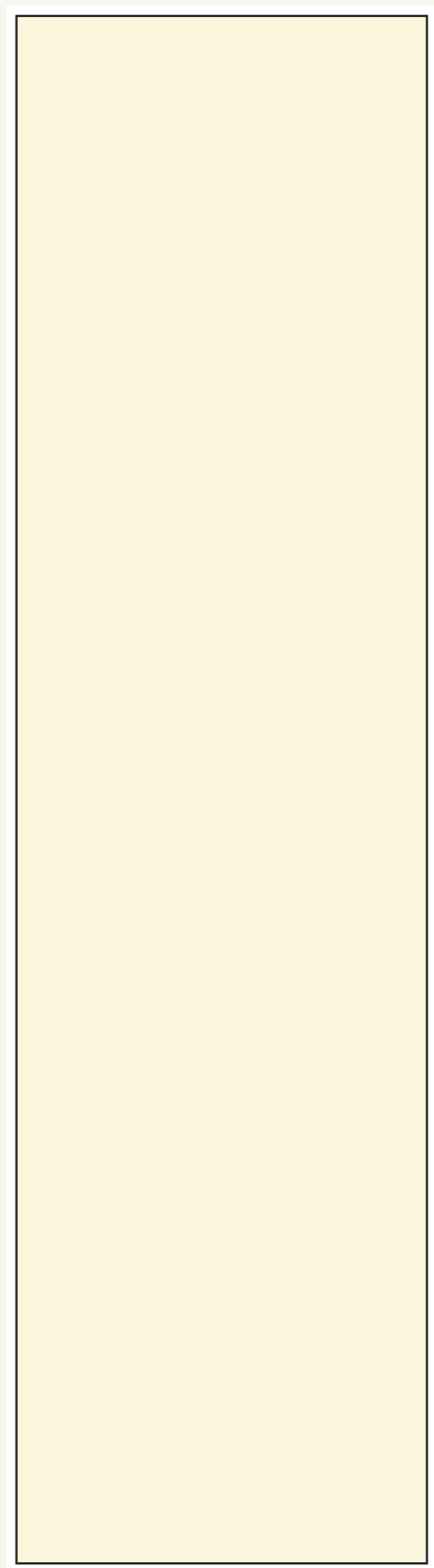
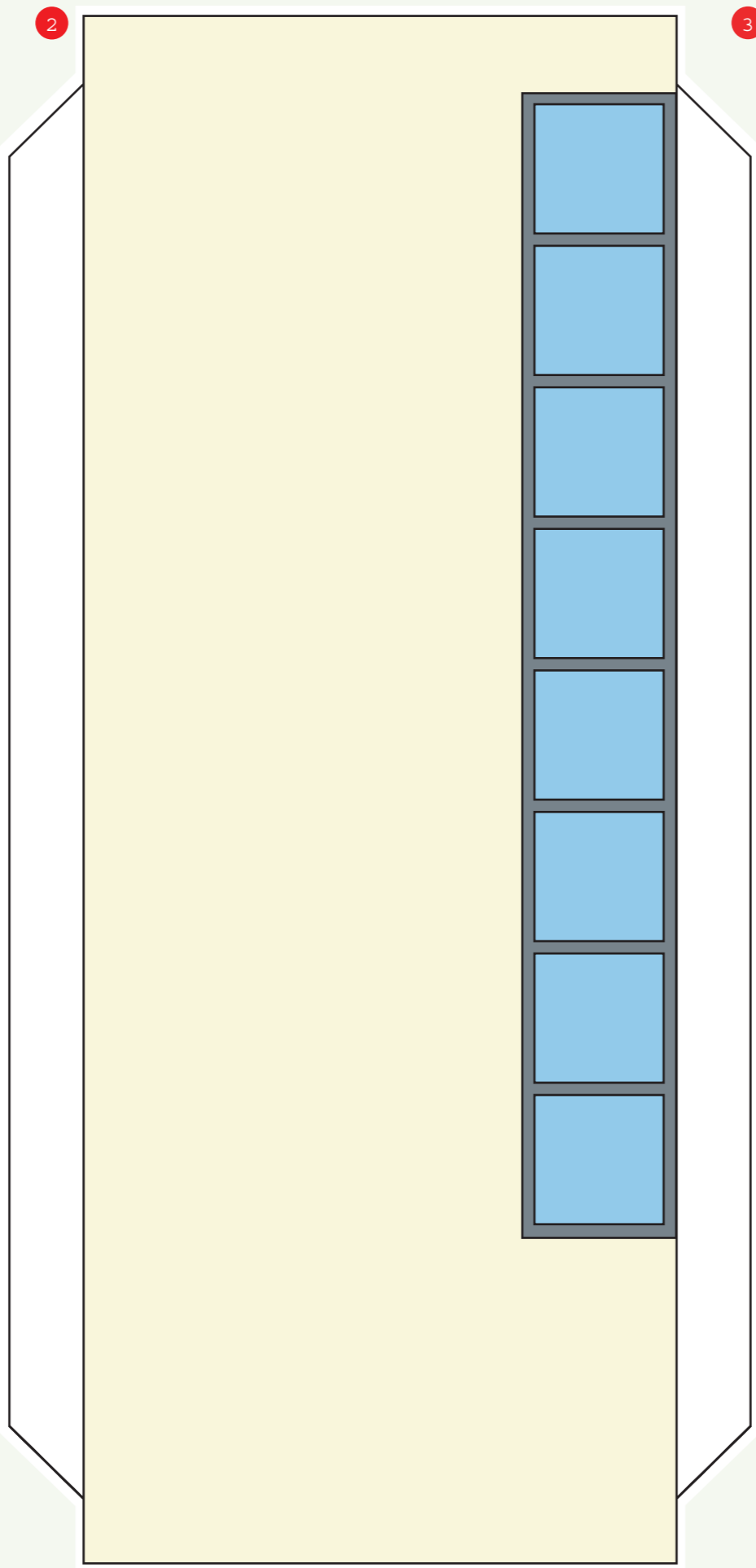
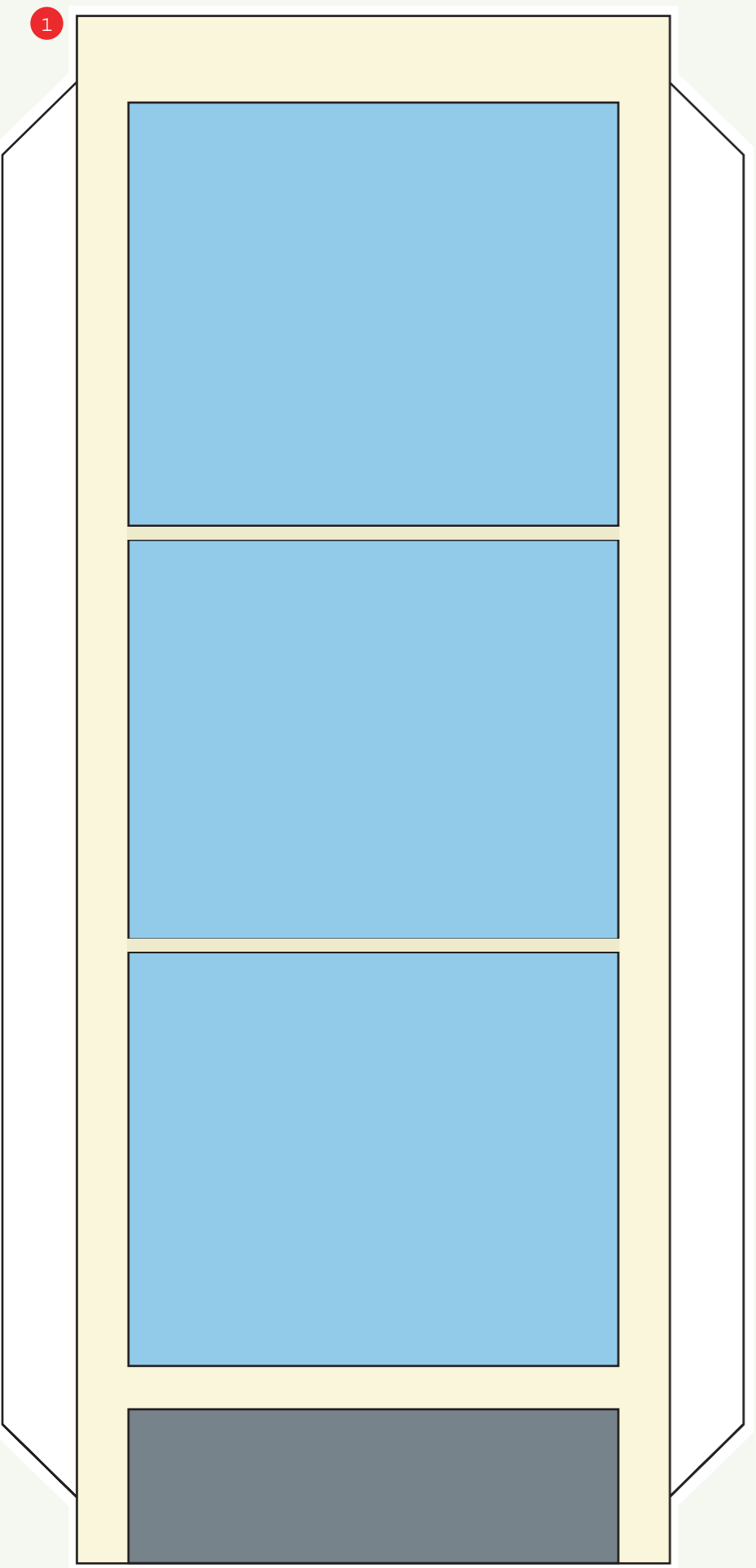


# H-DAY SUPERMALL

FOLD OUT KIT  
HOBBY SPECIAL 2002-1

A-FORMAT SHEET  
1/2

1 - 9  
BUILD BY NUMBERS



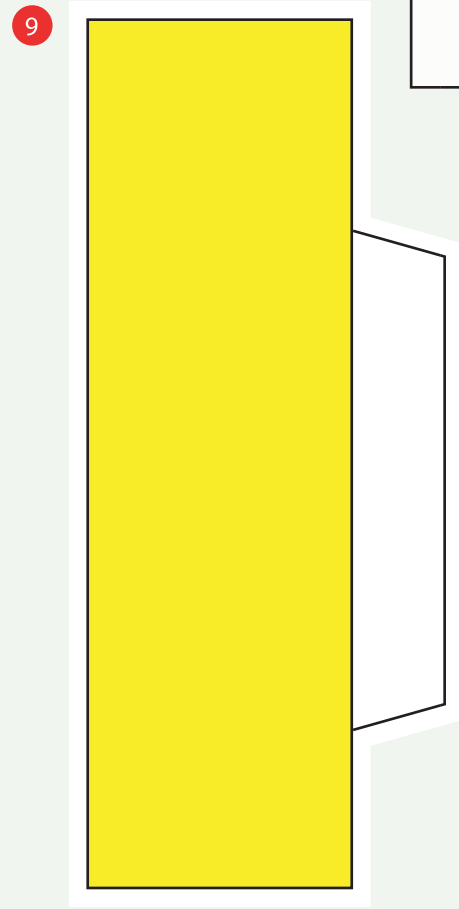
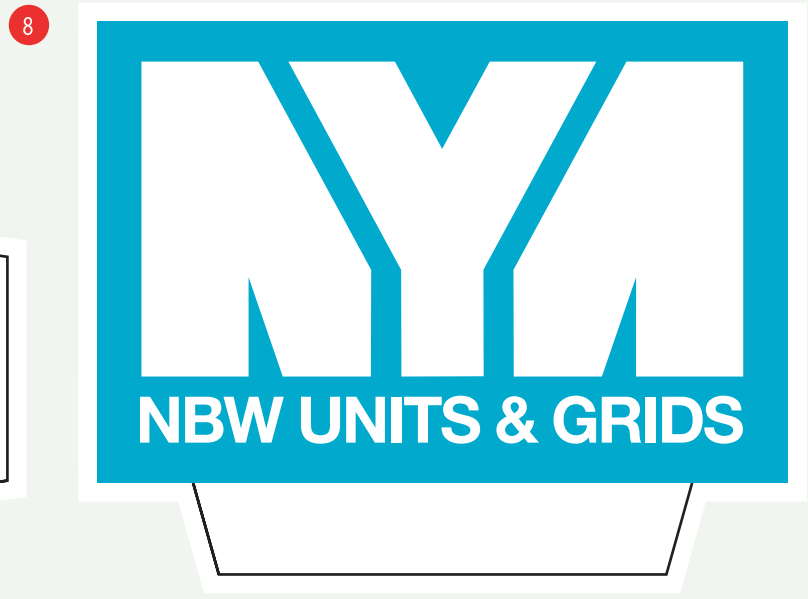
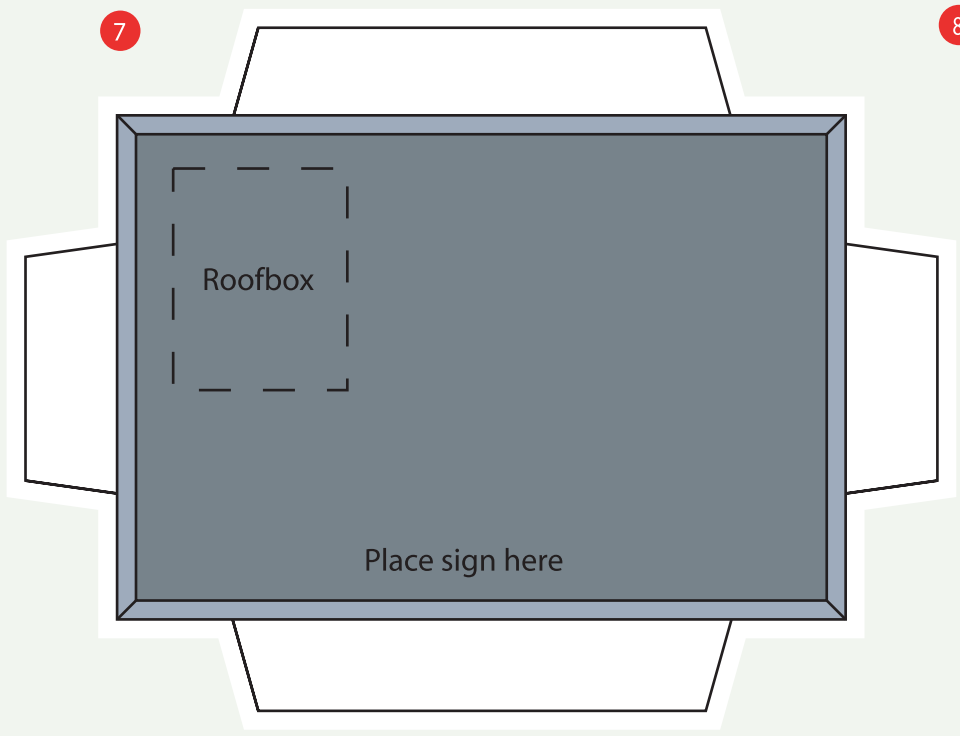
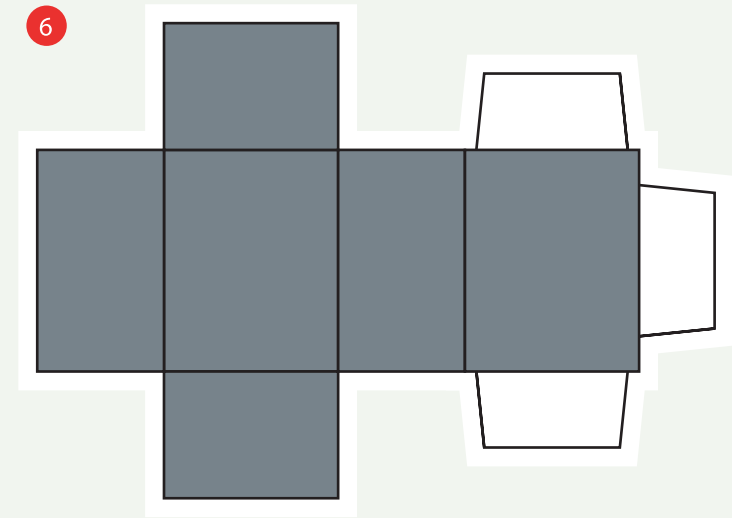
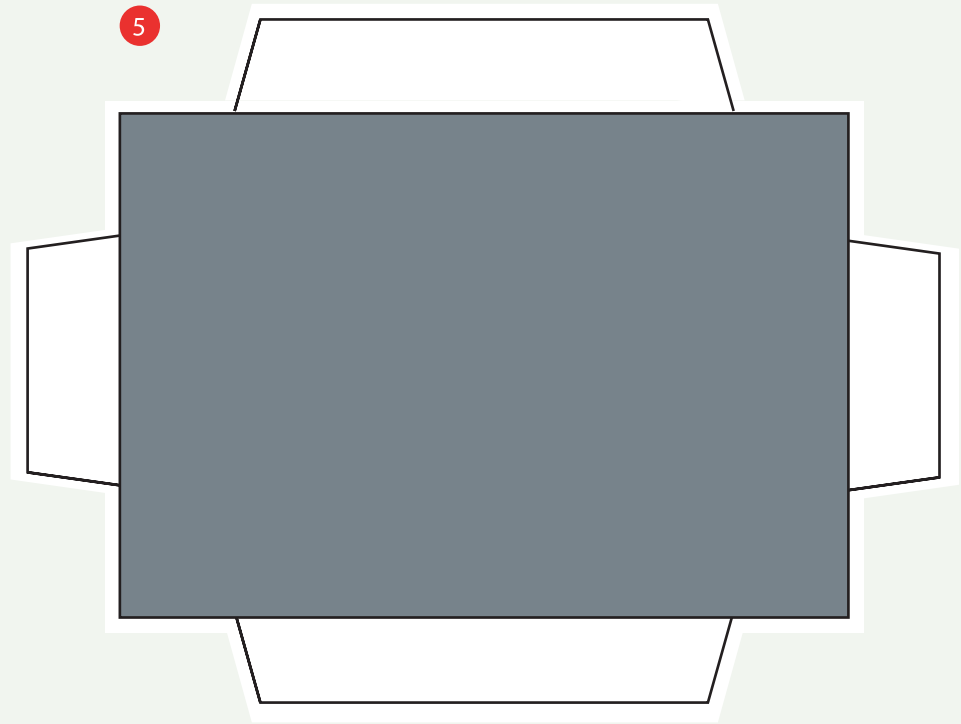


# H-DAY SUPERMALL

FOLD OUT KIT  
HOBBY SPECIAL 2002-1

A-FORMAT SHEET  
2/2

1-9  
BUILD BY NUMBERS



If you've done it right, your house should look something like the house in the picture!  
Happy building!



- 1. Front 2. Back 3. Right side
  - 4. Left side 5. Base of building
  - 6. Roofbox 7. Top of building
  - 8. Sign 9. Sign on the left
- THE PARTS